

New homes at  
**Poplar Riverside**  
E14 0LL

Coming  
Soon



**Get in touch**

with questions  
and to register  
your interest.

- Jasmine
- ☎ 07930 377 303
- ✉ [jasmine.miah@poplarharca.co.uk](mailto:jasmine.miah@poplarharca.co.uk)
- Abdul
- ☎ 07734 346 125
- ✉ [mujahid.abdul-majeed@poplarharca.co.uk](mailto:mujahid.abdul-majeed@poplarharca.co.uk)





Flats provided unfurnished, specification will differ

## New riverside homes



### Family Homes

44 new family homes



### Poplar HARCA Priority

for tenants who live in regeneration areas.



### Size

One, two, three and four bedroom flats



### Tenure

Assured ('lifetime') tenancy



### Rent

London Affordable Rent



### Layout

Open plan and separate living space available



### Shops

New cafés, crèche, supermarket and shops



### Greenspaces

2.5 acre new riverside park



### Transport

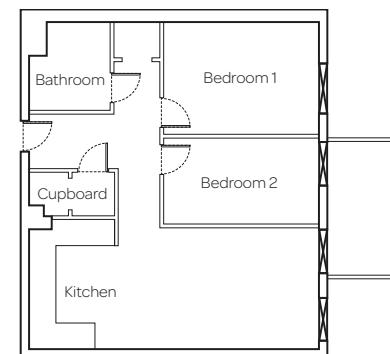
10 min walk to Canning Town Underground, 12 min Walk to East India Station. New connections across the River Lea and public riverside walkways to be opened up as part of the development.

## Every new home is designed to 'design for space' standards set by the Government.

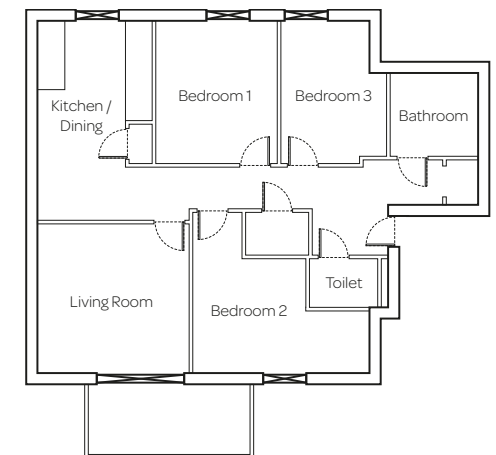
### Typical room size

Single room (for one person)	6.51 m2	70 sq. ft
Double room (for two people)	10.22 m2	110 sq. ft

### Typical 2 Bedroom Home



### Typical 3 Bedroom Home



### Typical 2 bedroom Flat size

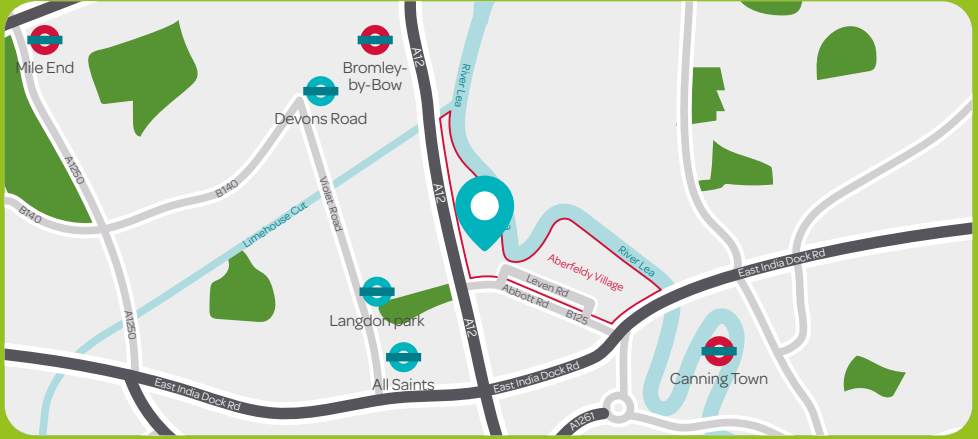
62 to 68m2	667 to 732 sq. ft
------------	-------------------

### Typical 3 bedroom Flat size

98 to 100m2	1055 to 1076 sq. ft
-------------	---------------------

While we can't promise a new home at Poplar Riverside for everyone, priority will be given to Poplar HARCA tenants, as set out in Tower Hamlets Council's lettings policy. [poplarharca.co.uk](http://poplarharca.co.uk)

# Location



Located in a perfect position on Leven Road, with riverside views of the River Lea, the development will have a 2.5 acre riverside park and a new walk way. Canning Town underground station is only a 10 minute walk away.

## Help with moving

If you accept an offer, there is financial and other help to move: Home Loss is £7,800, increasing to £8,100 on 1 October 2023. We'll arrange the move, and pay for costs such as disconnections and re-connections of your services.

## Get in touch

with questions  
and to register  
your interest.

- Jasmine
- ☎ **07930 377 303**
- ✉ **[jasmine.miah@poplarharca.co.uk](mailto:jasmine.miah@poplarharca.co.uk)**
- Abdul
- ☎ **07734 346 125**
- ✉ **[mujahid.abdul-majeed@poplarharca.co.uk](mailto:mujahid.abdul-majeed@poplarharca.co.uk)**