

TEVIOT RSG PROGRESS UPDATE/YOUR PRIORITIES RESULTS

09 August 2022



EXERCISE

Review feedback from Co-Design Workshops

Streets

**Open
Spaces**

Homes

Community

**Have we
listened?**

**What's
missing?**

**Vote – Your
Prioritise**



YOU SAID – IMPACT UPDATE RESULTS – STREETS

Streets - Happening



Happening

Reduce ASB in Teviot through better lighting, design & CCTV ✓

Connect Langdon Park to the rest of Teviot ✓

Retain Bus route ✓

All private communal outside space connected to new homes to be enclosed and secure ✓

Better access to green spaces ✓

Re-Provide secure parking ✓

Link South & North Teviot ✓

Provide accessible/effective refuse systems ✓

Improve access/safety of Everest Place foot tunnel/both sides of A12 ✓

Northern junction with A12/ Teviot Street – manage speed/ safety ✓

Services roads to access shops ✓

Research flood risks ✓

Traffic calming St Leonards Road ✓

Reinstate historic Teviot Street ✓

Safe routes through the neighbourhood – remove hidden spaces ✓

New southern entrance to Teviot ✓

Top quality street lighting across Teviot/CCTV ✓

YOU SAID – IMPACT UPDATE RESULTS – STREETS

Streets - Exploring - Results



53 Increase safety and security across Teviot

33 Improve safety around DLR entrance

27 Improve Fawe Street bridge/reduce crime

25 Improve air quality/ impact of A12 on health

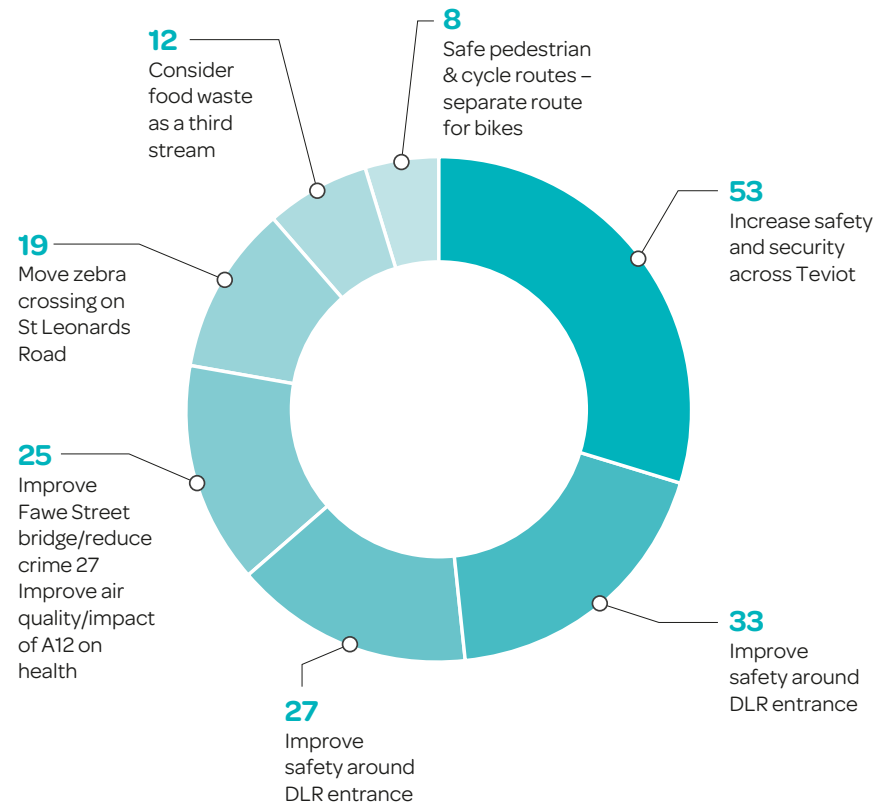
19 Move zebra crossing on St Leonards Road

12 Consider food waste as a third stream

8 Safe pedestrian & cycle routes – separate route for bikes

YOU SAID – IMPACT UPDATE RESULTS – STREETS

Streets - Exploring - Pie Chart



YOU SAID – IMPACT UPDATE RESULTS – STREETS

Streets - Additional



6 Green St Leonards
Road/open Ullin St

5 More policing

5 Safer bus stops/shelters

3 309 Bus service up to
Tynne Court

1 Bike storage

0 Lighting for parking
spaces

YOU SAID – IMPACT UPDATE RESULTS – COMMUNITY

Community - Happening



Happening

Café – close to / overlooking the park ✓

Re-Provide Teviot Mosque ✓

Community Pub by the Canal ✓

Keep the community together
Mixed homes, to allow
young people to stay local,
high rise A12 ✓

Retain mixed community, no 'us
& them' ✓

Provide training and job
opportunities ✓

Provide places to study/work
from home ✓

YOU SAID – IMPACT UPDATE RESULTS – COMMUNITY

Community - Exploring - Results



26 GP Surgery

19 Pressure on utilities,
water pressure / supply

19 Better choice/range of
shops

15 New mini supermarket
type shop, free cash
points

15 Activities for children,
young people and the
whole community 15

10 Play areas for children

9 Places to sit, meet, eat
and relax

8 Community Centre
current location, or in
new central area.

8 Gym

6 Shops central area/
under new blocks on A12

5 Farmers market/fruit &
veg stall in Teviot Central

3 Workspace and
enterprise opportunities
along the A12

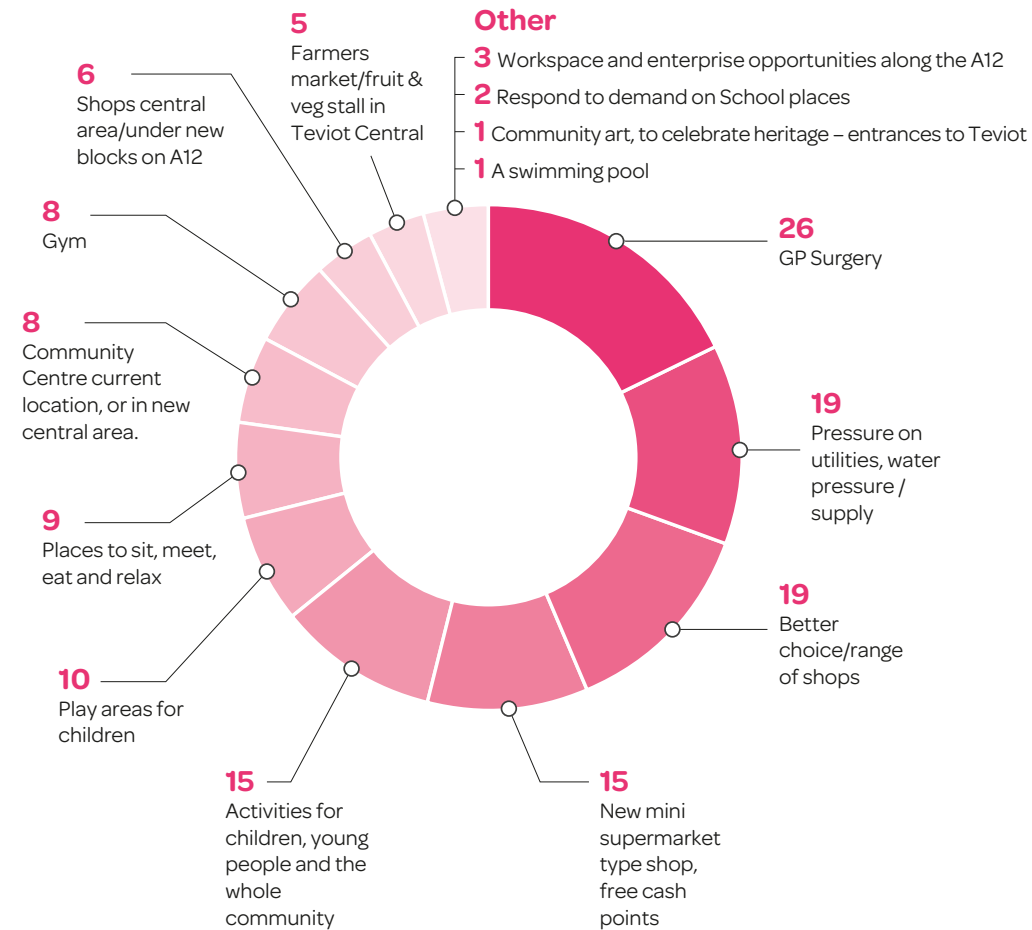
2 Respond to demand on
School places 2

1 A swimming pool

1 Community art, to
celebrate heritage –
entrances to Teviot

YOU SAID – IMPACT UPDATE RESULTS – COMMUNITY

Community - Exploring - Pie Chart



YOU SAID – IMPACT UPDATE RESULTS – COMMUNITY

Community - Additional



7

Provision for Church

0

Dental service

4

Construction/Training/
Jobs for Young People

0

Parcel lockers

1

Training academy

1

Water sports

1

Post office provision

YOU SAID – IMPACT UPDATE RESULTS – HOMES

Homes - Happening



Happening

Choice of deck access or internal landings ✓

Good level of storage space ✓

Provide space between building, retain privacy ✓

Choice of open/separate kitchen ✓

External brickwork ✓

Houses/Low rise by St Michaels stepping up ✓

High rise on A12 ✓

Provide video door entry system ✓

Windows in kitchens for existing residents ✓

Chadborn homes to have view of park ✓

Homes for life ✓

Tall building overlooking Langdon Park, offering views/easy access to DLR ✓

A range of property types, houses, flats, maisonettes ✓

Explain the type of properties and number of bed properties in each location ✓

Dual aspect homes ✓

Sustainable homes reducing the burden of bills ✓

Low to medium rise homes for existing residents ✓

Safe & secure homes ✓

Top quality build ✓

YOU SAID – IMPACT UPDATE RESULTS – HOMES

Homes - Happening continued



Happening

A choice of integral or protruding balconies ✓

Same size or bigger ✓

Increase number of social homes ✓

A variety of designs ✓

More homes for people in housing need ✓

YOU SAID – IMPACT UPDATE RESULTS – HOMES

Homes - Exploring - Results



50 Two bedroom houses

48 Retain more low rise within the Estate

42 Good access to sunlight / daylight / good level of privacy

31 Big window in living room

15 Teviot Street include houses

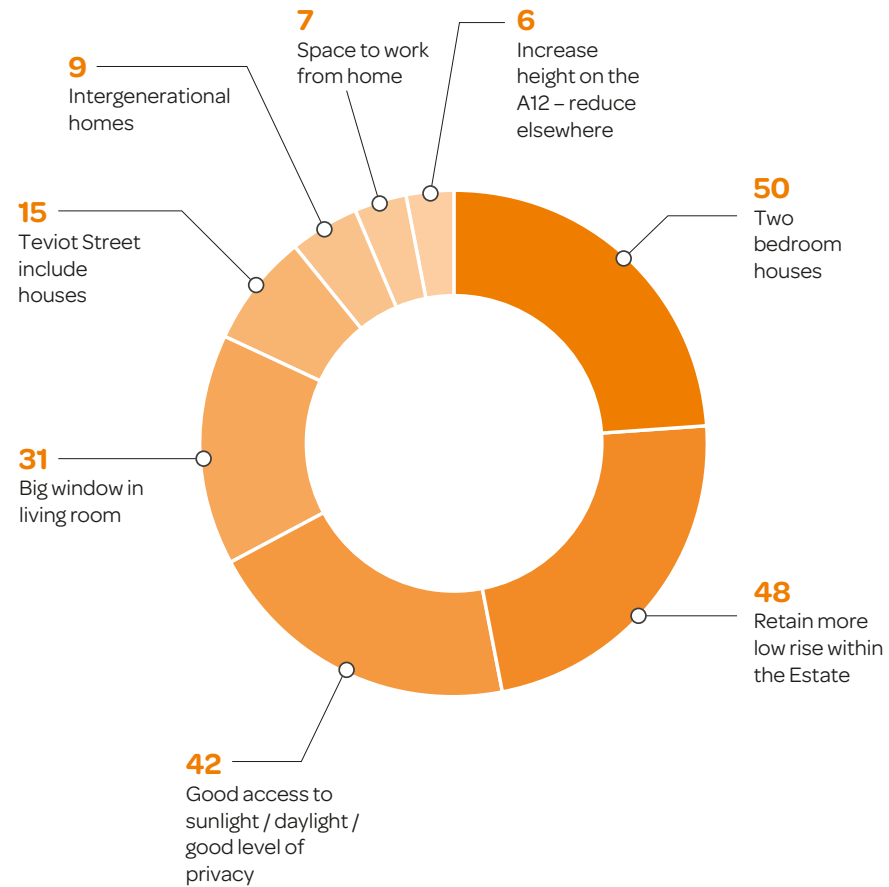
9 Intergenerational homes

7 Space to work from home

6 Increase height on the A12 – reduce elsewhere

YOU SAID – IMPACT UPDATE RESULTS – HOMES

Homes - Exploring - Pie Chart



YOU SAID – IMPACT UPDATE RESULTS – HOMES

Homes - Additional



14 Window/ventilation in bathroom

10 Good storage/not at the expense of other space

9 Homes for older people/gated community

8 Re-Provide garages

4 Choice in unit design

3 Separate utility space

3 Washing line/drying space in bathroom

YOU SAID – IMPACT UPDATE RESULTS – OPEN SPACES

Open Spaces - Happening



Happening

More open space ✓

Provide a centre / heart to Teviot ✓

Areas to sit, relax, meet, work ✓

Secure communal spaces ✓

Sunlight / daylight a priority ✓

Improve access to Canal / provide pontoon/activities ✓

Design out crime in hotspots, Spey St, Langdon Park, Fawe St Bridge, Zetland Street, Teviot Street ✓

Extend Langdon Park into Teviot ✓

Open private spaces available to all residents in the block – no ‘us & them’ ✓

Defensible spaces in front of homes/include hedges ✓

Quiet / private spaces ✓

Homes to have views of green space ✓

Community gardens ✓

Celebrate the area around the War Memorial/focal point ✓

Growing spaces ✓

Water features need to be well managed/safe ✓

YOU SAID – IMPACT UPDATE RESULTS - OPEN SPACES

Open Spaces - Exploring - Results



31 Improve Langdon Park
– activities, facilities &
safety

26 Improve canal towpath/
pontoon under A12

25 Play spaces – not close
too homes

20 Easy to manage well
maintained green &
open spaces

17 Dedicated dog area

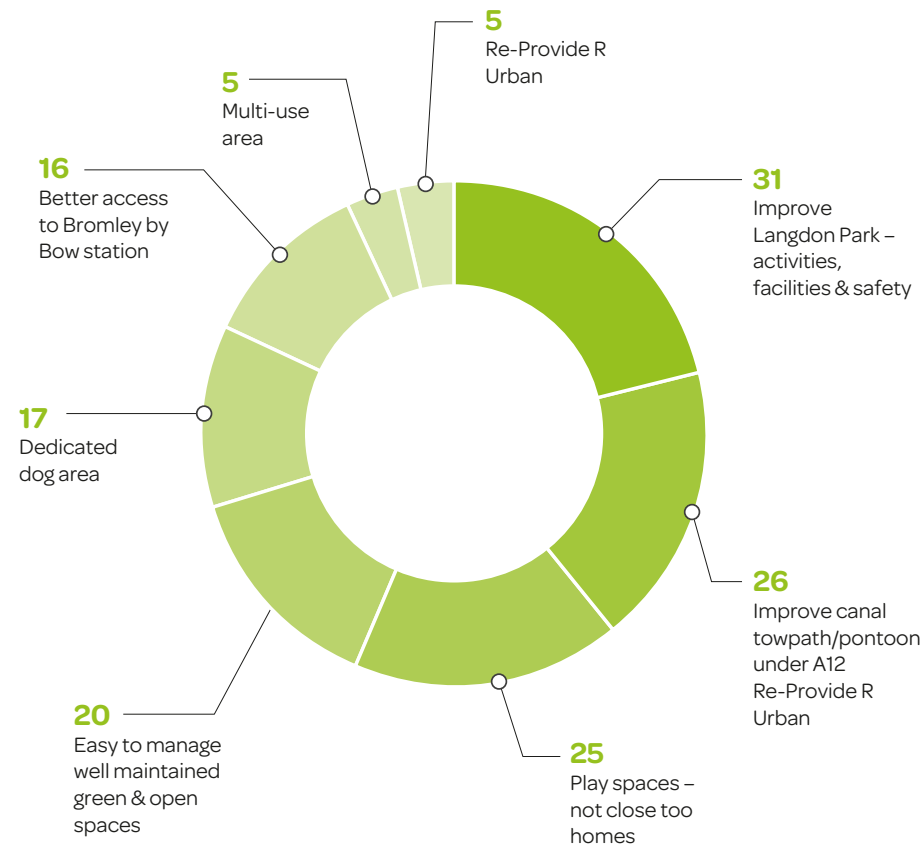
16 Better access to
Bromley by Bow station

5 Multi-use area

5 Re-Provide R Urban

YOU SAID – IMPACT UPDATE RESULTS - OPEN SPACES

Open Spaces - Exploring - Pie Chart



YOU SAID – IMPACT UPDATE RESULTS – OPEN SPACES

Open Spaces - Additional



14 Private gardens

7 More sunlight/daylight information

5 Dog wardens/enforcement

2 Allotments/Food Growing

2 Work with enforcement team to target crime hotspots

1 Gardens like for like space

1 Careful thought regarding dog spaces design

0 No water features

YOU SAID – IMPACT UPDATE RESULTS

Exploring Top Results

Green Spaces

Improve Langdon Park – activities, facilities & safety **31**

Improve canal towpath/pontoon under A12 Re-Provide R Urban **26**

Play spaces – not close too homes **25**

Easy to manage well maintained green & open spaces **20**

Dedicated dog area **17**

Better access to Bromley by Bow station **16**

Homes

Two bedroom houses **50**

Retain more low rise within the Estate **48**

Good access to sunlight / daylight / good level of privacy **42**

Big window in living room **31**

Teviot Street include houses **15**



Streets

Increase safety and security across Teviot **53**

Improve safety around DLR entrance **33**

Improve Fawe Street bridge/reduce crime **27**

Improve air quality/impact of A12 on health **25**

Move zebra crossing on St Leonards Road **19**

Consider food waste as a third stream **12**

Community

GP Surgery **26**

Pressure on utilities, water pressure / supply **19**

Better choice/range of shops **19**

New mini supermarket type shop, free cash points **15**

Activities for children, young people and the whole community **15**

Play areas for children **10**