

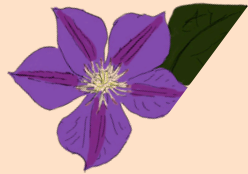


The Great Green Trail

Explore Lincoln estate's new green spaces

Follow the trail to discover colourful flowers, curious creatures, local history and shared heritage.

How many hidden surprises can you find?

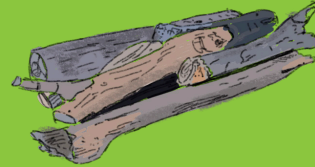
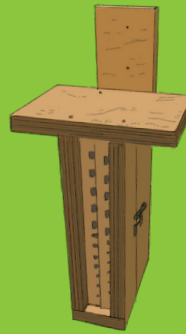


The Great Green Estate

Across the Poplar HARCA estate, there are lots of green spaces that aren't being used to their full potential – like grass verges, scrubland, and tired public areas.

The Great Green Estate project brings together local residents and community groups to explore how these spaces can be improved.

The aim is to create greener, healthier places that support local wildlife, help tackle the effects of climate change, and boost everyone's wellbeing.



Four new spaces

Explore the green spaces of the Great Green Estate with this guided map. The full walk takes about 20-30 minutes and is packed with interesting facts about the local area.



1. Fairfoot Wood

Enjoy a lovely woodland stroll through this former railway embankment. It's been improved by Friends of Tower Hamlets Cemetery Park, who added more variety by planting a range of native trees and woodland wildflowers.



2. Navenby Green

This shady woodland garden, with a cooler climate, makes for a peaceful spot to enjoy nature. The space connects to Fairfoot Wood and features four types of planting beds, as well as loggeries, log piles, climbers, and gabion seating – all helping to attract more wildlife.



3. Watts Grove Orchard

Planted by local residents in May 2025, this orchard features a mix of fruit trees and wildflowers that attract pollinators, like bees and butterflies, helping the plants grow fruit and seeds.



4. Gale Street Orchard

Also planted in May 2025, this orchard forms an important corridor connecting nearby spaces. With apple and pear trees surrounded by wildflowers, it offers a welcoming home for bees, butterflies, and other local wildlife.

Trail answers: 1. Nine 2. Green and blue 3. Fifteen 4. Four 5. Cockerel 6. Sylhet 7. Two 8. Crocodile 9. Three 10. Angel 11. Dove 12. Love Living Life


Follow the Great Green Trail

How many questions can you answer along the way?

Explore Poplar, uncovering its new green spaces and heritage as you go

Please be careful when crossing roads on your adventures around Poplar

3 At the back of the park is a long seat made of stones and other objects held in wire, creating insect homes. How many slices of wood are in there?



2 25 and 27 Fairfoot Road have bright colourful doors, but what colours are they?



1 Walk up the chalky path to the wood and on your right you'll see some heavy wooden sleepers. How many?



12 There are a set of 6 colourful murals here. What words are present on this one...




11 Two white birds of peace are painted on the Linc Centre as part of a local portrait project. What are these birds called?


10 A green pub here has a local name painted in gold letters. What is the name?

The _____ of Bow

9 How many pear trees can you find in this orchard? The labels will help you find out.



5 What type of gold creature can be found on top of the roof of All Hallows church?



7 How many plum trees are planted here?



8 In between the two orchards on green turf is a plastic animal usually found in a jungle river. What's the animal called?

4 You will find a pointy sculpture by Kay's Local with photos of local people and their objects. How many keys are shown?




Scan to discover more!
Check your answers, learn about the project, and share your photos with others using #GreatGreenTrail

POPULAR **HARCA**

IN PARTNERSHIP WITH
MAYOR OF LONDON

You can also check the reverse for answers. Illustrations by Matt Ponting.